

# LIFESPAN™

COMPOSITE ARCHITECTURAL BEAMS



## HYBRID ARCHITECTURAL SYSTEM



Intertek



[www.eva-last.net.au](http://www.eva-last.net.au)

A PRODUCT BY

**EVA-LAST®**  
INSPIRED BY NATURE, DESIGNED FOR LIFE.

# LIFESPAN™

COMPOSITE ARCHITECTURAL BEAMS

## HYBRID ALUMINIUM BAMBOO COMPOSITE BEAM

Lifespan hybrid aluminium composite beams give you the creative freedom to build more memorable outdoor architectural designs. These multipurpose beams have the functionality, resiliency, and beauty to make your project remarkable. Whether you choose to use Lifespan beams for pergolas, entryways, dramatic screening, or your own creative architectural vision, revel in the feeling of building something truly innovative.

PHOTOGRAPHY CREDIT: CHRIS SCOTT | COPYRIGHT © SCOTTY PHOTOGRAPHY

## HIGH PERFORMANCE FOR HIGH EXPECTATIONS

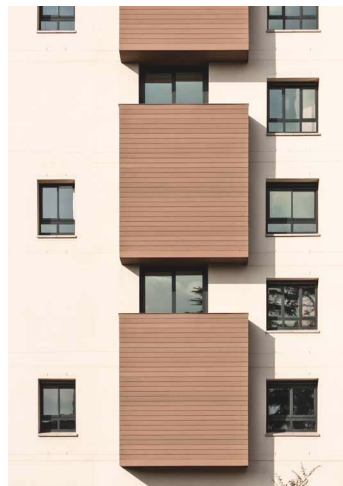
Lifespan beams add style and functionality in a diverse range of applications. Enjoy the shade and privacy of a pergola or screen, or enhance the appeal of your home exterior with beams that give the look of wood without the maintenance hassles. The versatility of Lifespan decorative architectural beams is matched only by their beauty.



PERGOLAS



PRIVACY SCREENS



CLADDING & SOFFITS



DECORATIVE ARCHITECTURE



For more information on Lifespan visit [www.eva-last.net.au](http://www.eva-last.net.au)



## TAKE HOME THE BENEFITS



**DESIGN VERSATILITY**  
Architectural beams offer a diverse range of aesthetic applications



**LIGHTWEIGHT DESIGN**  
Specialised aluminium core for easier installation at height



**LOW-MAINTENANCE**  
The look of timber beams without the upkeep



**INCREASED SPAN**  
Reinforced composite beam with built-in aluminium core



**DECAY RESISTANT**  
Resists biodegradation, corrosion, insects, & harsh weather



**FADE RESISTANT**  
Built-in UV protection for beautiful durability



## LIFESPAN ARCHITECTURAL BEAMS

Lifespan architectural beams offer design versatility and increased span thanks to their specialised aluminium core that makes for easier installation at height. The outer coating of low-maintenance bamboo composite resists biodegradation, corrosion, insects, and harsh weather, and offers built-in UV protection for beautiful durability. Enjoy the look of timber beams without the upkeep.

### TRI-EXTRUDED ALUMINIUM COMPOSITE

- 1 Aluminium core
- 2 Engineered flexible adhesive
- 3 Outer protective composite coating (Eva-tech surface technology)



## INCREASED SPAN

Lifespan architectural beams offer the span capability of much heavier, solid beams thanks to their built-in aluminium core. This core significantly enhances the dimensional and flexural stability of the beam, while the Eva-tech composite coating provides a realistic timber aesthetic, as well as resistance to severe climatic and biodeterioration conditions.



PHOTOGRAPHY CREDIT: CHRIS SCOTT | COPYRIGHT © SCOTTY PHOTOGRAPHY



## PROFILE SIZE OPTIONS

Lifespan hybrid aluminium composite beams are available in a range of sizes and shapes to suit your outdoor project design. Lifespan has been designed to meet industrial norms. However, building codes and standards may differ between jurisdictions or countries. Be sure to consult your local building codes before installing Lifespan composite beams.



**Dimensions:** 50 x 30 mm  
**Weight:** 0.8 kg/m



**Dimensions:** 100 x 30 mm  
**Weight:** 1.3 kg/m



**Dimensions:** 150 x 50 mm  
**Weight:** 3.3 kg/m

## End caps



End caps and post caps are available allowing for a neat finish to your Lifespan composite beams.

## LIFESPAN ACCESSORIES

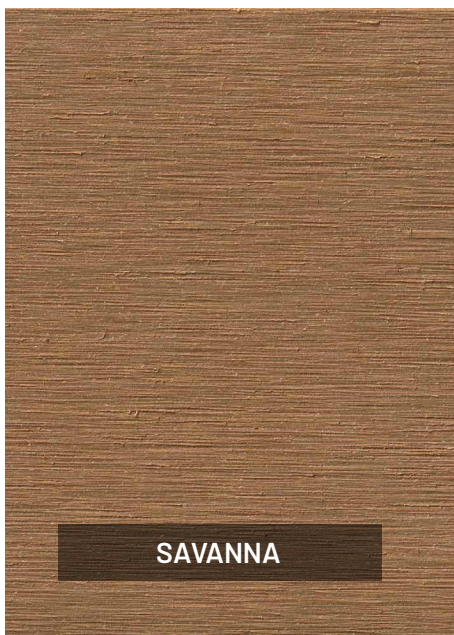
IMAGE	COLOUR	SIZE	DESCRIPTION
	Rusteak	100.5 x 30.5	Composite end cap
	Savanna		
	Xavia		
	Rusteak	150 x 50	Composite end cap
	Savanna		
	Xavia		
	Rusteak	30 x 50	Composite end cap
	Savanna		
	Xavia		



PHOTOGRAPHY CREDIT: PATRICK KING PHOTOGRAPHY  
COPYRIGHT © RADISSON RED HOTEL

COLOUR RANGE: BRUSHED FINISH

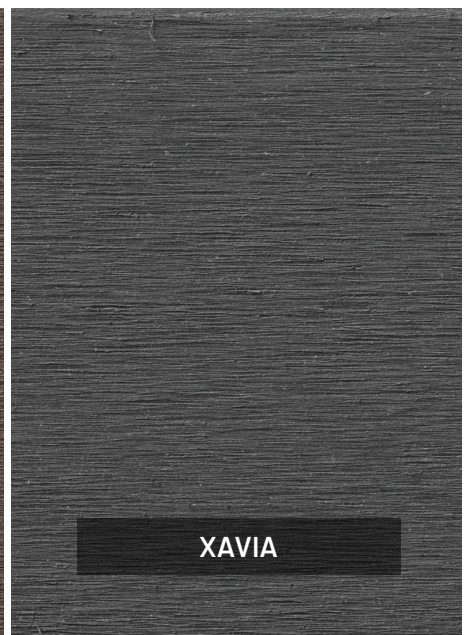
TECHNOLOGY: **Eva-tech**®



SAVANNA



RUSTEAK



XAVIA

## TRI-EXTRUDED ALUMINIUM COMPOSITE



**50 x 30 mm**

The 50 x 30 mm Lifespan decorative profile enhances your outdoor space with the look of a traditional timber baluster. This compact batten sized profile is a popular choice for creating durable screens, gates, pergolas and other low-maintenance outdoor architectural features.

Dimensions	50 x 30 mm
Standard length	5,8 m
Weight	0.8 kg/m

### Hollow aluminium composite beam



**End caps available**

Colour matched end caps create a finished look on beam ends.



**100 x 30 mm**

The 100 x 30 mm Lifespan decorative profile is a fan favourite in the Lifespan range, ideal for creating striking and durable outdoor pergolas, beams, privacy screens, or other attractive architectural features. Enjoy the look of timber beams without the upkeep and environmental toll.

Dimensions	100 x 30 mm
Standard length	5,8 m
Weight	1.3 kg/m

### Hollow aluminium composite beam



**End caps available**

Colour matched end caps create a finished look on beam ends.





Featured: Lifespan, Eva-tech Savanna  
Rectangular (50 x 30 mm) decorative beam





## TRI-EXTRUDED ALUMINIUM COMPOSITE



150 x 50 mm

The 150 x 50 mm Lifespan decorative beam is a larger rectangular profile in the Lifespan range and creates a stately aesthetic for your outdoor space, ideal for use as an oversized pergola beam, privacy screen, or in conjunction with smaller Lifespan beams within the system.

Dimensions	150 x 50 mm
Standard length	5,8 m
Weight	3.3 kg/m

### Hollow aluminium composite beam



#### End caps available

Colour matched end caps create a finished look on beam ends.





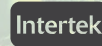
Featured: Lifespan, Eva-tech Rusteak  
Rectangular (100 x 30 mm) decorative beam





## LOW ENVIRONMENTAL IMPACT

Holistically sustainable manufacturing & use of raw materials



# CHOOSE SUSTAINABLE BUILDING MATERIALS



## RENEWABLE RESOURCES & RENEWABLE ENERGY

We believe that how we manufacture is just as important as what we manufacture when it comes to going green. That's why we've traded in fossil fuels for renewable energy. Our products use solar power as part of our manufacturing process. We are fully committed to bringing you a product that's holistically sustainable.

Eva-Last is internationally recognised for our commitment to the environment. We're proud of the work we do to promote environmental sustainability, and invite you to choose timber alternatives that are gentle on the Earth.

Proudly distributed in Australia by



[salesnsw@iti.net.au](mailto:salesnsw@iti.net.au)

ITI NSW - Tel: 02 8805 5000

ITI Newcastle - Tel: 02 4953 7666

JCS - Tel: 02 9833 0355

- Made from recycled materials
- No trees felled
- No treatment or toxic chemicals required for maintenance
- Solar power used in the manufacturing process
- Reduced impact on landfills
- Reduced carbon footprint



[www.eva-last.net.au](http://www.eva-last.net.au)

© 2023 Eva-Last reserves the rights to all brands, products, and trademarks within this publication.  
Eva-Last ITEM: 723 V1 INT-LIFESPAN BROCHURE

### Disclaimer:

Although we make every effort to ensure the information contained in this brochure is accurate, we are NOT responsible for any errors or misprint that occurs and we are NOT responsible for ANY damage or liability that result from the use (or misuse) of the information. In the event that an error does occur, we reserve the right to correct, or make changes to, this information at any time.

### Disclaimer:

Span data provided herein is indicative based on specific test load conditions (refer to your product Technical Data Sheet). Dimensional and mass data provided herein is indicative based on typical production and may vary with manufacture and material tolerance. Before installing any Eva-Last product, ensure that the application is rational and complies with the local regulations and building codes. Wherever necessary, consult a suitably qualified professional.